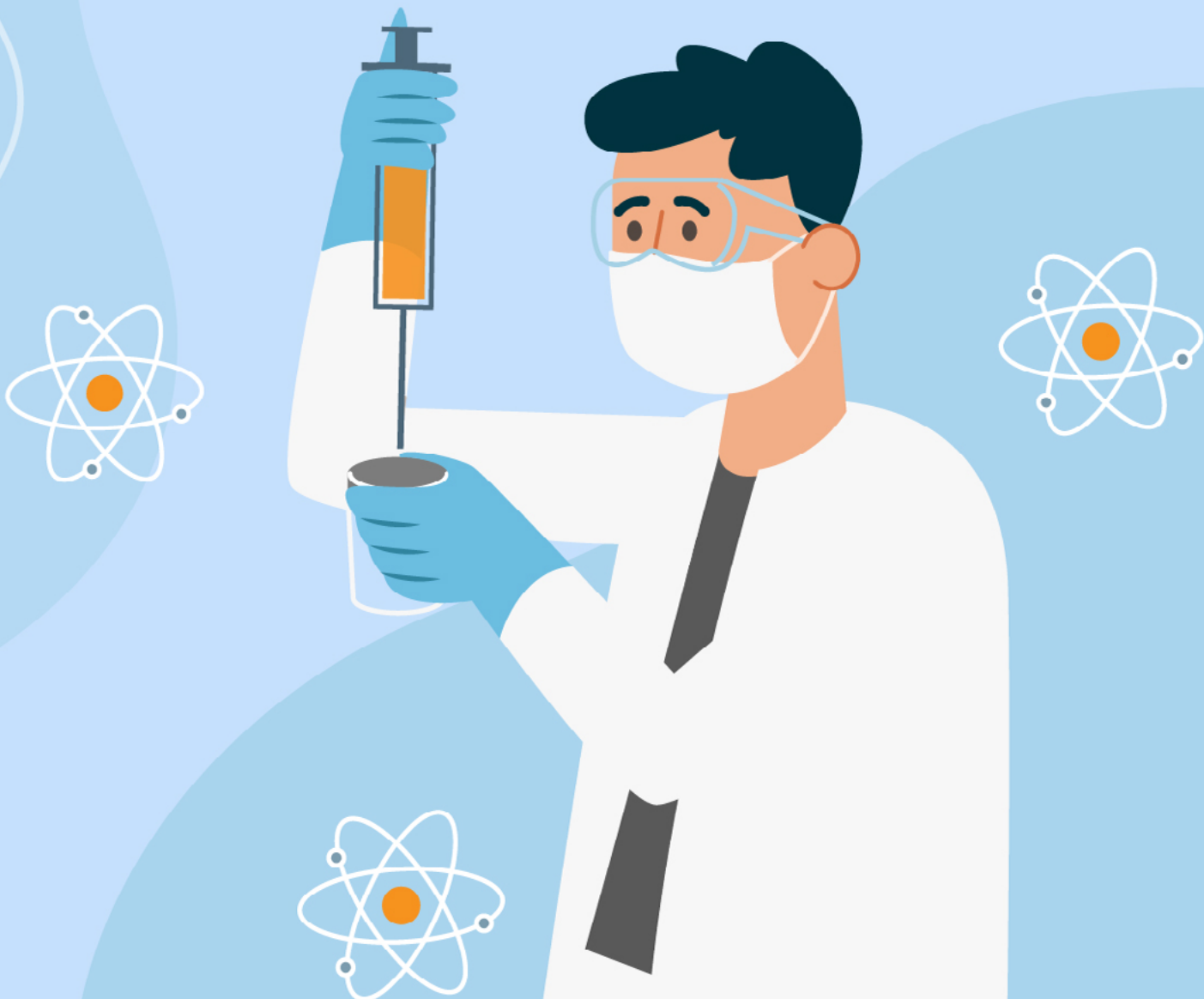




Serviço Público Federal  
Ministério da Educação  
Universidade Federal de Uberlândia  
Faculdade de Odontologia  
Programa de Pós-graduação em Odontologia

# Produção científica 2021

Artigos científicos produzidos e publicados por  
discentes e docentes do Programa de Pós-Graduação  
em Odontologia da UFU



Publicação	Link de acesso
Dietrich L, de Assis Costa MDM, Blumenberg C, Nascimento GG, Paranhos LR, da Silva GR. A meta-analysis of ozone effect on tooth bleaching. <i>Sci Rep.</i> 2021 Jun 23;11(1):13177. doi: 10.1038/s41598-021-92733-8.	<a href="https://pubmed.ncbi.nlm.nih.gov/34162984/">https://pubmed.ncbi.nlm.nih.gov/34162984/</a>
Bittencourt MA, Sá Mafra PH, Julia RS, Travençolo BA, Silva PU, Blumenberg C, Silva VK, Paranhos LR. Accuracy of computer-aided image analysis in the diagnosis of odontogenic cysts: A systematic review. <i>Med Oral Patol Oral Cir Bucal.</i> 2021 May 1;26(3):e368-e378. doi: 10.4317/medoral.24238.	<a href="https://pubmed.ncbi.nlm.nih.gov/33247568/">https://pubmed.ncbi.nlm.nih.gov/33247568/</a>
Figueiredo CE, Paranhos LR, da Silva RP, Herval ÁM, Blumenberg C, Zanetta-Barbosa D. Accuracy of orthognathic surgery with customized titanium plates-Systematic review. <i>J Stomatol Oral Maxillofac Surg.</i> 2021 Feb;122(1):88-97. doi: 10.1016/j.jormas.2020.06.011.	<a href="https://pubmed.ncbi.nlm.nih.gov/32622000/">https://pubmed.ncbi.nlm.nih.gov/32622000/</a>
Matos F de S, Cunha TC, Ribeiro MAG, Araujo CS, Bernardino Ítalo de M, Moura CCG, Paranhos LR. Accuracy of the dental pulp sensibility test using cold spray for the diagnosis of pulp diseases: an observational clinical study. <i>Biosci. J. [Internet].</i> 2021 Jul. 26 [cited 2023 Jul. 18];37:e37040.	<a href="https://seer.ufu.br/index.php/biosciencejournal/article/view/60365">https://seer.ufu.br/index.php/biosciencejournal/article/view/60365</a>
Valle AL, Silva ACA, Dantas NO, Sabino-Silva R, Melo FCC, Moreira CS, Oliveira GS, Rodrigues LP, Goulart LR. Application of ZnO Nanocrystals as a Surface-Enhancer FTIR for Glyphosate Detection. <i>Nanomaterials (Basel).</i> 2021 Feb 17;11(2):509. doi: 10.3390/nano11020509.	<a href="https://pubmed.ncbi.nlm.nih.gov/33671396/">https://pubmed.ncbi.nlm.nih.gov/33671396/</a>
Franco A, de Oliveira MN, Campos Vidigal MT, Blumenberg C, Pinheiro AA, Paranhos LR. Assessment of dental age estimation methods applied to Brazilian children: a systematic review and meta-analysis. <i>Dentomaxillofac Radiol.</i> 2021 Feb 1;50(2):20200128. doi: 10.1259/dmfr.20200128.	<a href="https://pubmed.ncbi.nlm.nih.gov/32479117/">https://pubmed.ncbi.nlm.nih.gov/32479117/</a>
Mauricio Andres Tinajero-Aroni, Suzane Cristina Pigossi, Guilherme José Pimentel-Oliveira, Elton Carlos Pichotano, Rosemary Adriana Chierici-Marcantonio. Association between platelet-rich fibrin and collagen matrix for root coverage: Case Series. <i>Int. J. Inter. Dent Vol.</i> 14(1); 48-51, 2021. DOI: 10.4067/S2452-55882021000100048	<a href="https://www.scielo.cl/scielo.php?script=sci_arttext&amp;pid=S2452-55882021000100048">https://www.scielo.cl/scielo.php?script=sci_arttext&amp;pid=S2452-55882021000100048</a>
Gondim PHCC, Limirio PHJO, Rocha FS, Batista JD, Dechichi P, Travençolo BAN, Backes AR. Automatic Segmentation of Bone Canals in Histological Images. <i>J Digit Imaging.</i> 2021 Jun;34(3):678-690. doi: 10.1007/s10278-021-00454-1.	<a href="https://pubmed.ncbi.nlm.nih.gov/33948761/">https://pubmed.ncbi.nlm.nih.gov/33948761/</a>

Publicação	Link de acesso
Oliveira LV, de Souza GL, da Silva GR, Magalhães TEA, Freitas GAN, Turrioni AP, de Rezende Barbosa GL, Moura CCG. Biological parameters, discolouration and radiopacity of calcium silicate-based materials in a simulated model of partial pulpotomy. <i>Int Endod J.</i> 2021 Nov;54(11):2133-2144. doi: 10.1111/iej.13616.	<a href="https://pubmed.ncbi.nlm.nih.gov/34418112/">https://pubmed.ncbi.nlm.nih.gov/34418112/</a>
Tavares NRNO, Galvão ADM, Dietrich L, Carvalho RF, Silva RS, Silva ALFE, Silva GRD. Can ozone or violet light improve the color change or physicochemical properties of hydrogen peroxide-bleached tooth? <i>Braz Dent J.</i> 2021 Jul-Aug;32(4):19-30. doi: 10.1590/0103-6440202104002.	<a href="https://pubmed.ncbi.nlm.nih.gov/34787248/">https://pubmed.ncbi.nlm.nih.gov/34787248/</a>
Santos IA, Shimizu JF, de Oliveira DM, Martins DOS, Cardoso-Sousa L, Cintra ACO, Aquino VH, Sampaio SV, Nicolau-Junior N, Sabino-Silva R, Merits A, Harris M, Jardim ACG. Chikungunya virus entry is strongly inhibited by phospholipase A2 isolated from the venom of <i>Crotalus durissus terrificus</i> . <i>Sci Rep.</i> 2021 Apr 22;11(1):8717. doi: 10.1038/s41598-021-88039-4.	<a href="https://pubmed.ncbi.nlm.nih.gov/33888774/">https://pubmed.ncbi.nlm.nih.gov/33888774/</a>
Silva PUJ, Paranhos LR, Meneses-Santos D, Blumenberg C, Macedo DR, Cardoso SV. Combination of toothbrushing and chlorhexidine compared with exclusive use of chlorhexidine to reduce the risk of ventilator-associated pneumonia: A systematic review with meta-analysis. <i>Clinics (Sao Paulo).</i> 2021 Jun 11;76:e2659. doi: 10.6061/clinics/2021/e2659.	<a href="https://pubmed.ncbi.nlm.nih.gov/34133659/">https://pubmed.ncbi.nlm.nih.gov/34133659/</a>
Martins M, Vieira WA, Paranhos LR, Motta RH, da Silva CS, Rodriguez C, Ramacciato JC. Comparison of piezosurgery and conventional rotary instruments in schneider's membrane sinus lifting: A pilot randomized trial. <i>J Clin Exp Dent.</i> 2021 Aug 1;13(8):e802-e808. doi: 10.4317/jced.57953.	<a href="https://pubmed.ncbi.nlm.nih.gov/34512920/">https://pubmed.ncbi.nlm.nih.gov/34512920/</a>
de Lima Navarro MF, Pascotto RC, Borges AFS, Soares CJ, Raggio DP, Rios D, Bresciani E, Molina GF, Ngo HC, Miletić I, Frencken J, Wang L, Menezes-Silva R, Puppini-Rontani RM, de Carvalho RM, Gurgan S, Leal SC, Tüzüner T, Fagundes TC, Nicholson JW, Sidhu SK. Consensus on glass-ionomer cement thresholds for restorative indications. <i>J Dent.</i> 2021 Apr;107:103609. doi: 10.1016/j.jdent.2021.103609.	<a href="https://pubmed.ncbi.nlm.nih.gov/33610589/">https://pubmed.ncbi.nlm.nih.gov/33610589/</a>
Borges JS, Rabelo GD, Irie MS, Paz JLC, Spin-Neto R, Soares PBF. Cortical Bone Modifications after Radiotherapy: Cortex Porosity and Osteonal Changes Evaluated Over Time. <i>Braz Dent J.</i> 2021 Jan-Feb;32(1):9-15. doi: 10.1590/0103-6440202103384.	<a href="https://pubmed.ncbi.nlm.nih.gov/33914008/">https://pubmed.ncbi.nlm.nih.gov/33914008/</a>
Dias Resende CC, Quirino Barbosa TA, Moura GF, Piola Rizzante FA, Mendonça G, Zancopé K, Domingues das Neves F. Cost and effectiveness of 3-dimensionally printed model using three different printing layer parameters and two resins. <i>J Prosthet Dent.</i> 2023 Feb;129(2):350-353. doi: 10.1016/j.prosdent.2021.06.006.	<a href="https://pubmed.ncbi.nlm.nih.gov/34218898/">https://pubmed.ncbi.nlm.nih.gov/34218898/</a>

Publicação	Link de acesso
<p>Guedes FR, Bonvicini JF, de Souza GL, da Silva WH, Moura CC, Paranhos LR, Turrioni AP. Cytotoxicity and dentin composition alterations promoted by different chemomechanical caries removal agents: A preliminary in vitro study. <i>J Clin Exp Dent</i>. 2021 Aug 1;13(8):e826-e834. doi: 10.4317/jced.58208.</p>	<p><a href="https://pubmed.ncbi.nlm.nih.gov/34512923/">https://pubmed.ncbi.nlm.nih.gov/34512923/</a></p>
<p>Paz JLC, Borges JS, Rodrigues JF, Fagundes DM, Barbosa GLR, Soares CJ, Soares PBF. Dental undergraduate students' ability in the diagnosis of root fractures: Comparative analysis of different imaging methods. <i>J Dent Educ</i>. 2022 Feb;86(2):136-143. doi: 10.1002/jdd.12798.</p>	<p><a href="https://pubmed.ncbi.nlm.nih.gov/34599517/">https://pubmed.ncbi.nlm.nih.gov/34599517/</a></p>
<p>Tavares TS, Da Costa AAS, Aguiar MCF, Loyola AM, Barcelos NS, Abreu MHNG, Mesquita RA, Tarquínio SBC, De Moraes Ê, Vasconcelos ACU, Costa NL, Mendonça EF, Cardoso SV, Nonaka CFW, Andrade AO, Johann ACBR, Michels AC, Libório-Kimura TN, Neto GOP, Caldeira PC. Differential diagnoses of solitary and multiple pigmented lesions of the oral mucosa: Evaluation of 905 specimens submitted to histopathological examination. <i>Head Neck</i>. 2021 Dec;43(12):3775-3787. doi: 10.1002/hed.26872.</p>	<p><a href="https://pubmed.ncbi.nlm.nih.gov/34519124/">https://pubmed.ncbi.nlm.nih.gov/34519124/</a></p>
<p>Oliveira GJPL, Pinotti FE, Aroni MAT, Marcantonio E Jr, Marcantonio RAC. Effect of different low-level intensity laser therapy (LLLT) irradiation protocols on the osseointegration of implants placed in grafted areas. <i>J Appl Oral Sci</i>. 2021 Apr 14;29:e20200647. doi: 10.1590/1678-7757-2020-0647.</p>	<p><a href="https://pubmed.ncbi.nlm.nih.gov/33886940/">https://pubmed.ncbi.nlm.nih.gov/33886940/</a></p>
<p>Cirelli T, Oliveira GJPL de, Nogueira AVB, Ribaldo IJP, Furuta EYD, Cirelli JA. Effect of electric, ultrasonic and manual toothbrushes on biofilm removal and gingivitis control: in vitro and parallel randomized controlled clinical trial study. <i>Braz. J. Oral Sci.</i> [Internet]. 2021 Feb. 18 [cited 2023 Jul. 18];20(00):e219280.</p>	<p><a href="https://periodicos.sbu.unicamp.br/ojs/index.php/bjos/article/view/8659280">https://periodicos.sbu.unicamp.br/ojs/index.php/bjos/article/view/8659280</a></p>
<p>Gomes MAB, Leão IFP, Oliveira LRS, Pereira RADS, Soares PBF, Soares CJ. Effect of handpiece light and material used in pulp chamber on dentin removal during root canal retreatment. <i>Braz Dent J</i>. 2021 Sep-Oct;32(5):87-95. doi: 10.1590/0103-6440202103926.</p>	<p><a href="https://pubmed.ncbi.nlm.nih.gov/34877981/">https://pubmed.ncbi.nlm.nih.gov/34877981/</a></p>
<p>Vilela ALR, Machado AC, Queiroz LL, Batista PHM, Faria-E-Silva AL, Menezes MS. Effect of Interval Time between Corrosive and Abrasive Challenges on a Nanoparticulate Composite Resin. <i>Eur J Dent</i>. 2021 Oct;15(4):607-611. doi: 10.1055/s-0041-1726161.</p>	<p><a href="https://pubmed.ncbi.nlm.nih.gov/34492727/">https://pubmed.ncbi.nlm.nih.gov/34492727/</a></p>
<p>Lopes CCA, Rodrigues RB, Cenci MS, Uehara JLS, Maske TT, Limirio PHJO, Soares PBF, Novais VR. Effect of ionizing radiation and cariogenic biofilm challenge on root-dentin caries. <i>Clin Oral Investig</i>. 2021 Jun;25(6):4059-4068. doi: 10.1007/s00784-020-03736-0.</p>	<p><a href="https://pubmed.ncbi.nlm.nih.gov/33765193/">https://pubmed.ncbi.nlm.nih.gov/33765193/</a></p>

Publicação	Link de acesso
Rosatto CMP, Ferraz DC, Oliveira LV, Soares PBF, Soares CJ, Tanomaru Filho M, Moura CCG. Effect of irrigation protocols on root canal wall after post preparation: a micro-CT and microhardness study. <i>Braz Oral Res.</i> 2021 Dec 6;35:e122. doi: 10.1590/1807-3107bor-2021.vol35.0122.	<a href="https://pubmed.ncbi.nlm.nih.gov/34878077/">https://pubmed.ncbi.nlm.nih.gov/34878077/</a>
Moreira RJ, de Deus RA, Ribeiro MTH, Braga SSL, Schettini ACT, Price RB, Soares CJ. Effect of Light-curing Unit Design and Mouth Opening on the Polymerization of Bulk-fill Resin-based Composite Restorations in Molars. <i>J Adhes Dent.</i> 2021 Apr 7;23(2):121-131. doi: 10.3290/j.jad.b1079561.	<a href="https://pubmed.ncbi.nlm.nih.gov/33825426/">https://pubmed.ncbi.nlm.nih.gov/33825426/</a>
de Moura, M. B., Tiossi, R., Loureiro, K. R. T., Cardoso, T. G., de Rezende, L. P. F., & Simamoto Júnior, P. C. (2021). The effect of mechanical loading cycles on different abutment types in implants with tapered internal connection. <i>Journal of Osseointegration</i> , 13(3), 156–163. <a href="https://doi.org/10.23805/JO.2021.13.03.9">https://doi.org/10.23805/JO.2021.13.03.9</a>	<a href="https://www.journalofosseointegration.eu/index.php/jo/article/view/329">https://www.journalofosseointegration.eu/index.php/jo/article/view/329</a>
José Rodolfo Spin, Guilherme José Pimentel Lopes de Oliveira, Rubens Spin-Neto, Rondinelli Donizetti Herculano, Rosemary Adriana Chierici Marcantonio, Effect of natural latex membranes on wound repair of palate donor areas: A pilot randomized controlled trial study, including the membranes characterization, <i>Materials Today Communications</i> , Volume 27, 2021, 102390, ISSN 2352-4928, <a href="https://doi.org/10.1016/j.mtcomm.2021.102390">https://doi.org/10.1016/j.mtcomm.2021.102390</a> .	<a href="https://www.sciencedirect.com/science/article/abs/pii/S2352492821003822?via%3Dihub#preview-section-abstract">https://www.sciencedirect.com/science/article/abs/pii/S2352492821003822?via%3Dihub#preview-section-abstract</a>
Exel AL, Lima PS, Urtado CB, Dibai-Filho AV, Vilanova CL, Sabino EFP, Cunha TM, de Farias-Filho FT, de Miranda CT, da Silva RS, Bassi-Dibai D. Effectiveness of a resistance exercise program for lower limbs in chronic renal patients on hemodialysis: A randomized controlled trial. <i>Hemodial Int.</i> 2021 Mar 8. doi: 10.1111/hdi.12918.	<a href="https://pubmed.ncbi.nlm.nih.gov/33682262/">https://pubmed.ncbi.nlm.nih.gov/33682262/</a>
Rossi MT, de Oliveira MN, Vidigal MTC, de Andrade Vieira W, Figueiredo CE, Blumenberg C, de Almeida VL, Paranhos LR, Oliveira LB, Siqueira WL, de Brito Júnior RB. Effectiveness of anesthetic solutions for pain control in lower third molar extraction surgeries: a systematic review of randomized clinical trials with network meta-analysis. <i>Clin Oral Investig.</i> 2021 Jan;25(1):1-22. doi: 10.1007/s00784-020-03675-w.	<a href="https://pubmed.ncbi.nlm.nih.gov/33161499/">https://pubmed.ncbi.nlm.nih.gov/33161499/</a>
Miranda RR, Ribeiro TE, Silva ELCD, Simamoto Júnior PC, Soares CJ, Novais VR. Effects of fractionation and ionizing radiation dose on the chemical composition and microhardness of enamel. <i>Arch Oral Biol.</i> 2021 Jan;121:104959. doi: 10.1016/j.archoralbio.2020.104959.	<a href="https://pubmed.ncbi.nlm.nih.gov/33171393/">https://pubmed.ncbi.nlm.nih.gov/33171393/</a>
Lupepsa AC, Vargas-Sanchez P, Moro MG, Mecca LEA, Claudino M, Soares PBF, Fischborn AR, Andreis JD, Franco GCN. Effects of low-dose aspirin on the osseointegration process in rats. <i>Int J Implant Dent.</i> 2021 Jan 13;7(1):3. doi: 10.1186/s40729-020-00283-x.	<a href="https://pubmed.ncbi.nlm.nih.gov/33438057/">https://pubmed.ncbi.nlm.nih.gov/33438057/</a>

Publicação	Link de acesso
<p>Matos AL, Silva PU, Paranhos LR, Santana IT, Matos FR. Efficacy of the laser at low intensity on primary burning oral syndrome: a systematic review. <i>Med Oral Patol Oral Cir Bucal</i>. 2021 Mar 1;26(2):e216-e225. doi: 10.4317/medoral.24144.</p>	<p><a href="https://pubmed.ncbi.nlm.nih.gov/33609024/">https://pubmed.ncbi.nlm.nih.gov/33609024/</a></p>
<p>Rocha BC, Rosa BSP, Cerqueira TS, de-Azevedo-Vaz SL, Barbosa GLR, Ferreira LM, Verner FS, Visconti MA. Evaluation of different teaching methods in the radiographic diagnosis of proximal carious lesions. <i>Dentomaxillofac Radiol</i>. 2021 May 1;50(4):20200295. doi: 10.1259/dmfr.20200295.</p>	<p><a href="https://pubmed.ncbi.nlm.nih.gov/33141626/">https://pubmed.ncbi.nlm.nih.gov/33141626/</a></p>
<p>Rosário BSM, Rosário HD, de Andrade Vieira W, Cericato GO, Nóbrega DF, Blumenberg C, Hugo FN, Costa MM, Paranhos LR. External control of fluoridation in the public water supplies of Brazilian cities as a strategy against caries: a systematic review and meta-analysis. <i>BMC Oral Health</i>. 2021 Aug 19;21(1):410. doi: 10.1186/s12903-021-01754-2.</p>	<p><a href="https://pubmed.ncbi.nlm.nih.gov/34412623/">https://pubmed.ncbi.nlm.nih.gov/34412623/</a></p>
<p>Beaini TL, Miamoto P, Duailibi-Neto EF, Tedeschi-Oliveira SV, Chilvarquer I, Melani RFH. Facial soft tissue depth measurements in cone-beam computed tomography: A study of a Brazilian sample. <i>Leg Med (Tokyo)</i>. 2021 May;50:101866. doi: 10.1016/j.legalmed.2021.101866.</p>	<p><a href="https://pubmed.ncbi.nlm.nih.gov/33667933/">https://pubmed.ncbi.nlm.nih.gov/33667933/</a></p>
<p>Rosa V, Ho D, Sabino-Silva R, Siqueira WL, Silikas N. Fighting viruses with materials science: Prospects for antiviral surfaces, drug delivery systems and artificial intelligence. <i>Dent Mater</i>. 2021 Mar;37(3):496-507. doi: 10.1016/j.dental.2020.12.004.</p>	<p><a href="https://pubmed.ncbi.nlm.nih.gov/33441249/">https://pubmed.ncbi.nlm.nih.gov/33441249/</a></p>
<p>Camargos GV, Rangel EF, Rangel KF, Machado AR, Damis LFT, Gonçalves LC, Oliveira GJPL. Guided implant surgery workflow in edentulous patients: A precise and rapid technique. <i>J Prosthet Dent</i>. 2022 Sep;128(3):239-244. doi: 10.1016/j.prosdent.2020.12.047.</p>	<p><a href="https://pubmed.ncbi.nlm.nih.gov/33632531/">https://pubmed.ncbi.nlm.nih.gov/33632531/</a></p>
<p>de Melo IS, Sabino-Silva R, Cunha TM, Goulart LR, Reis WL, Jardim ACG, Shetty AK, de Castro OW. Hydroelectrolytic Disorder in COVID-19 patients: Evidence Supporting the Involvement of Subfornical Organ and Paraventricular Nucleus of the Hypothalamus. <i>Neurosci Biobehav Rev</i>. 2021 May;124:216-223. doi: 10.1016/j.neubiorev.2021.02.008.</p>	<p><a href="https://pubmed.ncbi.nlm.nih.gov/33577841/">https://pubmed.ncbi.nlm.nih.gov/33577841/</a></p>
<p>Segnini B, Borges-Filho FF, Nicoli LG, Gonçalves M, Marcantonio C, Oliveira GJ, Jr Marcantonio E. Impact of soft tissue graft on the preservation of compromised sockets: a randomized controlled clinical pilot study. <i>Acta Odontol Latinoam</i>. 2021 Aug 1;34(2):119-126.</p>	<p><a href="https://pubmed.ncbi.nlm.nih.gov/34570859/">https://pubmed.ncbi.nlm.nih.gov/34570859/</a></p>

Publicação	Link de acesso
Pereira R, Soares P, Bicalho AA, Barcelos LM, Oliveira L, Soares CJ. Impact of the Porosity from Incremental and Bulk Resin Composite Filling Techniques on the Biomechanical Performance of Root-Treated Molars. <i>Oper Dent</i> . 2021 Mar 1;46(2):197-207. doi: 10.2341/19-297-L.	<a href="https://pubmed.ncbi.nlm.nih.gov/34192325/">https://pubmed.ncbi.nlm.nih.gov/34192325/</a>
Rito-Macedo F, Barroso-Oliveira M, Paranhos LR, Rodrigues-Brum J, Pereira-Lima IF, Gomes-França FM, de Brito-Junior RB. Implant insertion angle and depth: Peri-implant bone stress analysis by the finite element method. <i>J Clin Exp Dent</i> . 2021 Dec 1;13(12):e1167-e1173. doi: 10.4317/jced.58930.	<a href="https://pubmed.ncbi.nlm.nih.gov/34987707/">https://pubmed.ncbi.nlm.nih.gov/34987707/</a>
Osuna LGG, Soares CJ, Vilela ABF, Irie MS, Versluis A, Soares PBF. Influence of bone defect position and span in 3-point bending tests: experimental and finite element analysis. <i>Braz Oral Res</i> . 2020 Nov 13;35:e001. doi: 10.1590/1807-3107bor-2021.vol35.0001.	<a href="https://pubmed.ncbi.nlm.nih.gov/33206774/">https://pubmed.ncbi.nlm.nih.gov/33206774/</a>
de Souza Matos F, Rosatto CMP, Cunha TC, Vidigal MTC, Blumenberg C, Paranhos LR, Moura CCG. Influence of chelating solutions on tubular dentin sealer penetration: A systematic review with network meta-analysis. <i>Aust Endod J</i> . 2021 Dec;47(3):715-730. doi: 10.1111/aej.12525.	<a href="https://pubmed.ncbi.nlm.nih.gov/33938611/">https://pubmed.ncbi.nlm.nih.gov/33938611/</a>
Menezes-Júnior LR, Bittencourt MAV, Vilela ABF, Soares CJ, Nóbrega DF, Marinho RM de M, Rode S de M, Nahsan FPS, Paranhos LR. Influence of dental erosion on shear bond strength of ceramic brackets bonded with two different adhesive systems: an in vitro study. <i>Biosci. J. [Internet]</i> . 2021 Jan. 12 [cited 2023 Jul. 18];37:e37005.	<a href="https://seer.ufu.br/index.php/biosciencejournal/article/view/56246">https://seer.ufu.br/index.php/biosciencejournal/article/view/56246</a>
Tais Alves dos Reis, Giovanna Chaves Souza Borges, Karla Zancopé, Flávio Domingues das Neves. Influence of diameter on mechanical behavior of morse taper narrow implants. <i>Braz J Oral Sci</i> . 2022;21:e226036. <i>Braz J Oral Sci</i> . 2022;21:e226036	<a href="https://www.scielo.br/j/bjos/a/STtwwgdrQ43mBNp7F9KZrhb/abstract/?lang=en">https://www.scielo.br/j/bjos/a/STtwwgdrQ43mBNp7F9KZrhb/abstract/?lang=en</a>
Costa VCD, Machado AC, Soares PV, Raposo LH, Vasconcellos AB. Influence of material and loading location on stress distribution of inlays. <i>Am J Dent</i> . 2021 Jun;34(3):171-176.	<a href="https://pubmed.ncbi.nlm.nih.gov/34143589/">https://pubmed.ncbi.nlm.nih.gov/34143589/</a>
Cardoso IO, Machado AC, Fernandes LO, Soares PV, Raposo LHA. Influence of Tip Diameter and Light Spectrum of Curing Units on the Properties of Bulk-Fill Resin Composites. <i>Eur J Dent</i> . 2022 May;16(2):360-366. doi: 10.1055/s-0041-1735799.	<a href="https://pubmed.ncbi.nlm.nih.gov/34905778/">https://pubmed.ncbi.nlm.nih.gov/34905778/</a>
Ficho AC, de Souza Faloni AP, Pennisi PRC, Borges LGF, de Macedo Bernadino Í, Paranhos LR, Queiroz TP, Santos PL. Is interdental papilla filling using hyaluronic acid a stable approach to treat black triangles? A systematic review. <i>J Esthet Restor Dent</i> . 2021 Apr;33(3):458-465. doi: 10.1111/jerd.12694.	<a href="https://pubmed.ncbi.nlm.nih.gov/33332683/">https://pubmed.ncbi.nlm.nih.gov/33332683/</a>

Publicação	Link de acesso
<p>Pacheco ALD, de Melo IS, de Souza FMA, Nicácio DCSP, Freitas-Santos J, Oliveira Dos Santos YM, Costa MA, Cavalcante CMB, Gomes Dos Santos Neto J, Gitaí DLG, Sabino-Silva R, Torres de Miranda C, Borbely AU, Duzzioni M, Shetty AK, de Castro OW. Maternal crack cocaine use in rats leads to depressive- and anxiety-like behavior, memory impairment, and increased seizure susceptibility in the offspring. <i>Eur Neuropsychopharmacol.</i> 2021 Mar;44:34-50. doi: 10.1016/j.euroneuro.2020.12.011.</p>	<p><a href="https://pubmed.ncbi.nlm.nih.gov/33454149/">https://pubmed.ncbi.nlm.nih.gov/33454149/</a></p>
<p>Rodrigues JFS, da Silva LCM, Cardoso-Sousa L, Caixeta DC, Lückemeyer DD, Henrique AS, Pontes JP, da Silva LMG, Macedo JSS, Carvalho Júnior PS, Silva E Silva C, Martins MMRS, Monteiro-Neto V, Grisotto MAG, Fernandes AMR, Ferreira J, Calixto JB, Sabino-Silva R, Fernandes ES. Monitoring of Peripheral Blood Leukocytes and Plasma Samples: A Pilot Study to Examine Treatment Response to Leflunomide in Rheumatoid Arthritis. <i>Pharmaceuticals (Basel).</i> 2021 Jan 29;14(2):106. doi: 10.3390/ph14020106.</p>	<p><a href="https://pubmed.ncbi.nlm.nih.gov/33573015/">https://pubmed.ncbi.nlm.nih.gov/33573015/</a></p>
<p>Caixeta DC, Oliveira SW, Cardoso-Sousa L, Cunha TM, Goulart LR, Martins MM, Marin LM, Jardim ACG, Siqueira WL, Sabino-Silva R. One-Year Update on Salivary Diagnostic of COVID-19. <i>Front Public Health.</i> 2021 May 21;9:589564. doi: 10.3389/fpubh.2021.589564.</p>	<p><a href="https://pubmed.ncbi.nlm.nih.gov/34150692/">https://pubmed.ncbi.nlm.nih.gov/34150692/</a></p>
<p>Prates SG, Jesuíno RD, Paranhos LR, Herval Alex M, Gontijo LPT. Oral health self-perception for transgender people: a controlled cross-sectional study. <i>Biosci. J. [Internet].</i> 2021 Jan. 12 [cited 2023 Jul. 19];37:e37003.</p>	<p><a href="https://seer.ufu.br/index.php/biosciencejournal/article/view/55794">https://seer.ufu.br/index.php/biosciencejournal/article/view/55794</a></p>
<p>França K, Rezende Batista M, Fragelli CMB, Herval AM, Paranhos LR, Sabino-Silva R, Soares PBF, Turrioni AP. Oral Health Status of Children Who Require In-Home Medical Care. <i>J Dent Child (Chic).</i> 2021 Jan 15;88(1):29-34.</p>	<p><a href="https://pubmed.ncbi.nlm.nih.gov/33875049/">https://pubmed.ncbi.nlm.nih.gov/33875049/</a></p>
<p>do Carmo Ferruzzi LP, Resende Davi L, Cristina Braga de Lima D, Tavares M, Maia de Castro A. Oral health-related quality of life of athletes with disabilities: a cross sectional study. <i>Biosci. J. [Internet].</i> 2021 Jan. 20 [cited 2023 Jul. 19];37:e37008.</p>	<p><a href="https://seer.ufu.br/index.php/biosciencejournal/article/view/53664">https://seer.ufu.br/index.php/biosciencejournal/article/view/53664</a></p>
<p>Leocádio ACS, Silva M Jr, de Oliveira GJPL, Marcantonio É Jr. Osseointegration of different implant surfaces in areas grafted with deproteinized bovine bone associated or not with fresh bone marrow-Preclinical study in rabbits. <i>Clin Oral Implants Res.</i> 2021 Jun;32(6):767-775. doi: 10.1111/clr.13746.</p>	<p><a href="https://pubmed.ncbi.nlm.nih.gov/33749041/">https://pubmed.ncbi.nlm.nih.gov/33749041/</a></p>



Publicação	Link de acesso
Borges MG, Silva GR, Neves FT, Soares CJ, Faria-E-Silva AL, Carvalho RF, Menezes MS. Oxygen Inhibition of Surface Composites and Its Correlation with Degree of Conversion and Color Stability. <i>Braz Dent J.</i> 2021 Jan-Feb;32(1):91-97. doi: 10.1590/0103-6440202103641.	<a href="https://pubmed.ncbi.nlm.nih.gov/33914009/">https://pubmed.ncbi.nlm.nih.gov/33914009/</a>
Bonvicini JFS, Basso FG, de Souza Costa CA, Soares CJ, Turrioni AP. Photobiomodulation effect of red LED (630 nm) on the free radical levels produced by pulp cells under stress conditions. <i>Lasers Med Sci.</i> 2022 Feb;37(1):607-617. doi: 10.1007/s10103-021-03309-x.	<a href="https://pubmed.ncbi.nlm.nih.gov/33826014/">https://pubmed.ncbi.nlm.nih.gov/33826014/</a>
Silva PUJ, Meneses-Santos D, Vieira WA, Ramacciato JC, Silva RPD, Silva MCPD, Rode SM, Paranhos LR. Preemptive use of intravenous ibuprofen to reduce postoperative pain after lower third molar surgery: a systematic review of randomized controlled trials. <i>Clinics (Sao Paulo).</i> 2021 Jun 28;76:e2780. doi: 10.6061/clinics/2021/e2780.	<a href="https://pubmed.ncbi.nlm.nih.gov/34190850/">https://pubmed.ncbi.nlm.nih.gov/34190850/</a>
Barbosa PP, Cruvinel TM, Sakakura CE, Pimentel Lopes de Oliveira GJ, Zuza EC. Primary and Secondary Stability of Implants with Hydrophilic Surfaces in the Posterior Maxilla: A Split-Mouth Randomized Controlled Clinical Trial. <i>Int J Oral Maxillofac Implants.</i> 2021 Jul-Aug;36(4):787-792. doi: 10.11607/jomi.8636.	<a href="https://pubmed.ncbi.nlm.nih.gov/34411221/">https://pubmed.ncbi.nlm.nih.gov/34411221/</a>
Turrioni AP, Oliveira Neto NF, Xu Y, Morse L, Costa CAS, Battaglino R, Hebling J. Proliferation rate and expression of stem cells markers during expansion in primary culture of pulp cells. <i>Braz Oral Res.</i> 2021 Dec 6;35:e128. doi: 10.1590/1807-3107bor-2021.vol35.0128.	<a href="https://pubmed.ncbi.nlm.nih.gov/34878083/">https://pubmed.ncbi.nlm.nih.gov/34878083/</a>
Balabem ACCP, Oliveira MN, Herval ÁM, Bernardino ÍM, Vieira WA, Rodrigues RPCB, Paranhos LR. Quality of life of Family Health Strategy professionals: a systematic review. <i>Sao Paulo Med J.</i> 2021 Jul-Aug;139(4):331-340. doi: 10.1590/1516-3180.2020.0661.R2.0902021.	<a href="https://pubmed.ncbi.nlm.nih.gov/34076148/">https://pubmed.ncbi.nlm.nih.gov/34076148/</a>
Lima IFP, Matos FR, Bernardino ÍM, Santana ITS, Vieira WA, Blumenberg C, Siqueira WL, Paranhos LR. RANK, RANKL, and OPG in Dentigerous Cyst, Odontogenic Keratocyst, and Ameloblastoma: A Meta-Analysis. <i>Braz Dent J.</i> 2021 Jan-Feb;32(1):16-25. doi: 10.1590/0103-6440202103387.	<a href="https://pubmed.ncbi.nlm.nih.gov/33913997/">https://pubmed.ncbi.nlm.nih.gov/33913997/</a>
Soares CJ, Braga S, Price RB. Relationship Between the Cost of 12 Light-curing Units and Their Radiant Power, Emission Spectrum, Radiant Exitance, and Beam Profile. <i>Oper Dent.</i> 2021 May 1;46(3):283-292. doi: 10.2341/19-274-L.	<a href="https://pubmed.ncbi.nlm.nih.gov/34437704/">https://pubmed.ncbi.nlm.nih.gov/34437704/</a>

Publicação	Link de acesso
Neto NF de ON, Santana S, Barbosa de Paula LF, Mota Loyola A, Vitorino Cardoso S, Turrioni AP. Relato de lesão congênita de tecido adiposo rara em recém-nascido. Rev Pat Tocantins [Internet]. 5º de novembro de 2021	<a href="https://sistemas.uft.edu.br/periodicos/index.php/patologia/article/view/10457">https://sistemas.uft.edu.br/periodicos/index.php/patologia/article/view/10457</a>
Machado, R., Rother, A., Comparin, D., Pawar, A., Matos, F., Cunha, T., Alberton, L., & Paranhos, L. (2021). Removal of the smear layer by passive and continuous ultrasonic irrigation: a scanning electron microscopy study.. Journal Of Oral Research, 10(6), 1-8. doi:10.17126/joralres.2021.070	<a href="https://www.joralres.com/index.php/JOralRes/article/view/joralres.2021.070">https://www.joralres.com/index.php/JOralRes/article/view/joralres.2021.070</a>
Barros-Filho LA, DE Oliveira GJ, Barros LA, Marcantonio Jr E Jr. Retrospective evaluation about morse taper versus external hexagon implants placed after maxillary sinus lift. Minerva Dent Oral Sci. 2022 Feb;71(1):10-15. doi: 10.23736/S2724-6329.21.04533-2.	<a href="https://pubmed.ncbi.nlm.nih.gov/34132507/">https://pubmed.ncbi.nlm.nih.gov/34132507/</a>
Rosa RR, Garcia MA, Alves PT, Sousa EM, Pimentel LS, Barbosa LD, Loyola AM, Goulart LR, Faria PC, Cardoso SV. Revisiting the metallothionein genes polymorphisms and the risk of oral squamous cell carcinoma in a Brazilian population. Med Oral Patol Oral Cir Bucal. 2021 May 1;26(3):e334-e340. doi: 10.4317/medoral.24215.	<a href="https://pubmed.ncbi.nlm.nih.gov/33340085/">https://pubmed.ncbi.nlm.nih.gov/33340085/</a>
Rodrigues RPCB, Vieira WA, Siqueira WL, Agostini BA, Moffa EB, Paranhos LR. Saliva as a tool for monitoring hemodialysis: a systematic review and meta-analysis. Braz Oral Res. 2020 Dec 18;35:e016. doi: 10.1590/1807-3107bor-2021.vol35.0016.	<a href="https://pubmed.ncbi.nlm.nih.gov/33331408/">https://pubmed.ncbi.nlm.nih.gov/33331408/</a>
Rodrigues MP, Cunha LSD, Vilela ABF, Schettini ACT, Bragança GF, França R, Soares CJ. Selective carious tissue removal and glass ionomer liner reduction of pulp stress in bulk fill resin composite restorations. Braz Oral Res. 2021 Dec 6;35:e119. doi: 10.1590/1807-3107bor-2021.vol35.0119.	<a href="https://pubmed.ncbi.nlm.nih.gov/34878074/">https://pubmed.ncbi.nlm.nih.gov/34878074/</a>
Bonvicini JFS, de Souza GL, Basso FG, de Souza Costa CA, Moura CCG, Silva MJB, Turrioni AP. Specific parameters of infrared LED irradiation promote the inhibition of oxidative stress in dental pulp cells. Arch Oral Biol. 2021 Nov;131:105273. doi: 10.1016/j.archoralbio.2021.105273.	<a href="https://pubmed.ncbi.nlm.nih.gov/34600332/">https://pubmed.ncbi.nlm.nih.gov/34600332/</a>
Vilela ABF, Soares PBF, Beaini TL, Versluis A, Soares CJ. Splint stiffness and extension effects on a simulated avulsed permanent incisor-A patient-specific finite element analysis. Dent Traumatol. 2022 Feb;38(1):53-61. doi: 10.1111/edt.12705.	<a href="https://pubmed.ncbi.nlm.nih.gov/34309197/">https://pubmed.ncbi.nlm.nih.gov/34309197/</a>
Pellissari CVG, Jorge JH, Marin LM, Sabino-Silva R, Siqueira WL. Statherin-derived peptides as antifungal strategy against Candida albicans. Arch Oral Biol. 2021 May;125:105106. doi: 10.1016/j.archoralbio.2021.105106.	<a href="https://pubmed.ncbi.nlm.nih.gov/33740624/">https://pubmed.ncbi.nlm.nih.gov/33740624/</a>

Publicação	Link de acesso
<p>Maia TS, Lima TD, Vieira WA, Blumenberg C, Agostini BA, Nascimento GG, Paranhos LR, Menezes MS. Survival of atraumatic restorative treatment restorations in the elderly patients: a systematic review. <i>Braz Oral Res.</i> 2021 Dec 6;35:e130. doi: 10.1590/1807-3107bor-2021.vol35.0130.</p>	<p><a href="https://pubmed.ncbi.nlm.nih.gov/34878085/">https://pubmed.ncbi.nlm.nih.gov/34878085/</a></p>
<p>Silva CF, Cabral LC, Navarro de Oliveira M, da Mota Martins V, Machado AC, Blumenberg C, Paranhos LR, Santos-Filho PCF. The influence of customization of glass fiber posts on fracture strength and failure pattern: A systematic review and meta-analysis of preclinical ex-vivo studies. <i>J Mech Behav Biomed Mater.</i> 2021 Jun;118:104433. doi: 10.1016/j.jmbbm.2021.104433.</p>	<p><a href="https://pubmed.ncbi.nlm.nih.gov/33684707/">https://pubmed.ncbi.nlm.nih.gov/33684707/</a></p>
<p>Franco A, Lima LKG, de Oliveira MN, de Andrade Vieira W, Blumenberg C, Costa MM, Paranhos LR. The weak evidence of lip print analysis for sexual dimorphism in forensic dentistry: a systematic literature review and meta-analysis. <i>Sci Rep.</i> 2021 Dec 17;11(1):24192. doi: 10.1038/s41598-021-03680-3.</p>	<p><a href="https://pubmed.ncbi.nlm.nih.gov/34921209/">https://pubmed.ncbi.nlm.nih.gov/34921209/</a></p>
<p>Limirio PHJO, Soares PBF, Venâncio JF, Rabelo GD, Soares CJ, Dechichi P. Type I Diabetes Mellitus and Insulin Therapy on Bone Microarchitecture, Composition and Mechanical Properties. <i>Curr Diabetes Rev.</i> 2022;18(8):e301121198427. doi: 10.2174/1573399818666211130142153.</p>	<p><a href="https://pubmed.ncbi.nlm.nih.gov/34847845/">https://pubmed.ncbi.nlm.nih.gov/34847845/</a></p>
<p>Nascimento GG, Leite FRM, Pennisi PRC, López R, Paranhos LR. Use of air polishing for supra- and subgingival biofilm removal for treatment of residual periodontal pockets and supportive periodontal care: a systematic review. <i>Clin Oral Investig.</i> 2021 Mar;25(3):779-795. doi: 10.1007/s00784-020-03762-y.</p>	<p><a href="https://pubmed.ncbi.nlm.nih.gov/33464417/">https://pubmed.ncbi.nlm.nih.gov/33464417/</a></p>